

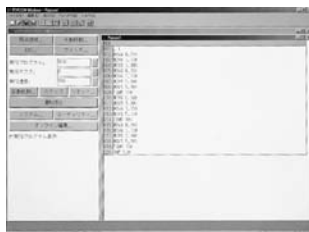
Applicable controllers ▶ **ERCD** **ERCX** **SR1-X** **SR1-P** **DRCX**

POPCOM is an easy to operate application software that makes tasks such as robot operation, writing-editing programs, and point teaching easy to visually understand.

Features

1 Easy to use

All items necessary for robot operation are displayed on single screen. There is no need to remember the menu structure so that it can be easily operated with mouse control by anybody.



2 Program editing

Edit amendment, cut, copy, paste, syntax check and program entry can be performed efficiently with function keys.



3 Point editing

Edit amendment, cut, copy, paste, syntax check, teach and trace functions are provided.



4 Help function

If you need some detailed information, robot language etc. during operation, operate [F1] key or [HELP] key to recall useful information on the screen.



5 Robot operation

By connecting between a computer and the controller with a communication cable, the controller can control the robot in the same way as a HPB / HPB-D (programming box).

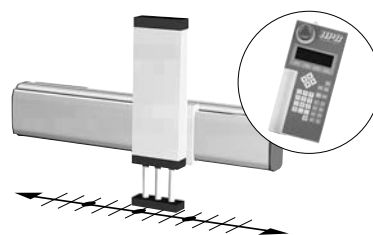


6 Creating point data

There are three methods available for creating the point data.

● MDI (Manual Data Input) teaching

The numeric keypad is used to enter position coordinate data directly.



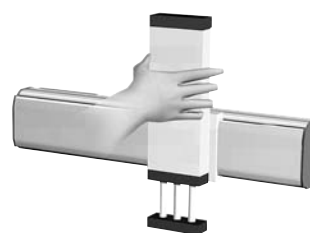
● Remote teaching

The robot arm is actually moved to the target position using the keys for point data registration.



● Direct teaching

The robot arm is manually moved to the target position with the servo motors off for point data registration.



PC supporting software POPCOM



Model	KR4-M4966-00
-------	--------------

Note. Use POPCOM with Version 1.13.0 or later when using SR1-P / SR1-X.

Environment

OS	Microsoft Windows 3.1/95/98/Me/NT/2000/XP <small>Note. The 64 bit version is not subject to the operation warranty.</small>
CPU	Exceeding the environment recommended by the OS being used
Memory	Exceeding the environment recommended by the OS being used
Hard disk	Vacant capacity of more than 4MB in the installation destination drive
Disk operation	CD-ROM drive
Applicable controllers	ERCD / ERCX / SR1-P / SR1-X / DRCX

Note. Windows is the registered trademark of US Microsoft Corporation in U.S.A. and other countries.

Data cables (5m)

Communication cable for POPCOM.
 Select from USB cable or D-sub cable.



Model	USB type (5m)	KBG-M538F-00
	D-Sub type	
	9pin-9pin (5m)	KAS-M538F-10

Note. This USB cable supports Windows 2000/XP or later.
 Note. Data cable jointly used for POPCOM, VIP, VIP+.
 Note. Older type data cable is made for 9Pin-25Pin specifications.
 Note. USB driver for communication cable can also be downloaded from our website.

9Pin-25Pin converter adapter

This is an adapter for converting the female D-sub25Pin to a female D-sub9Pin.
 This adapter is needed if using the ERCX and DRCX.



Model	KBB-M657E-01
-------	--------------

Note. It is unnecessary when using ERCD or SR1-X, SR1-P.

Controller & data cable / converter adapter matchup table

Data cables	Controller	<ul style="list-style-type: none"> •ERCD •SR1-X/SR1-P (9Pin) 	<ul style="list-style-type: none"> •ERCX •DRCX (25Pin)
	[9Pin-9Pin cable] • KAS-M538F-10 (SSC-2-5L)	Needs no converter adapter	9Pin-25Pin converter adapter KBB-M657E-01

Controller and data cable connection diagrams

