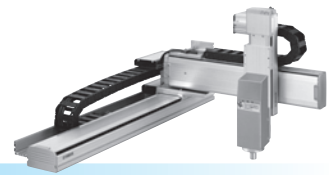


# SXYx 4 axes / ZRFL20

- Arm type
- Cable carrier
- Z-axis: clamped base / moving table type (200W)+R-axis



## Ordering method

<b>SXYx - C</b>				<b>ZRFL20</b>			<b>RCX240</b>		<b>R</b>			<b>BB</b>	
<b>Model</b>	<b>Cable</b>	<b>Combination</b>	<b>X-axis stroke</b>	<b>Y-axis stroke</b>	<b>ZR-axis</b>	<b>Z-axis stroke</b>	<b>Cable length</b>	<b>Controller</b>	<b>Usable for CE</b>	<b>Regenerative unit</b>	<b>Option I/O</b> <sup>Note 1</sup>	<b>Network option</b>	<b>Battery</b>
	A1 A2 A3 A4		15 to 105cm	15 to 55cm		15 to 35cm	3L: 3.5m (Standard) 5L: 5m 10L: 10m		No entry: Standard E: CE marking	R: RGU-2	N, P: Standard I/O 16/8 N1, P1: 40/24 N2, P2: 64/40 N3, P3: 88/56 N4, P4: 112/72	No entry: None CC: CC-Link DN: DeviceNet PB: Profibus EN: Ethernet YC: YC-Link <sup>Note 2</sup>	BB: 4 pcs

Note 1. N to N4 if NPN was selected, or P to P4 if PNP was selected for the I/O board.  
Note 2. Available only for the master.

## Specification

	X-axis	Y-axis	Z-axis	R-axis
<b>Axis construction</b> <sup>Note 1</sup>	F14H	F14	F10-BK equivalent guide-reinforced model	R5
<b>AC servo motor output (W)</b>	200	100	200	50
<b>Repeatability</b> <sup>Note 2</sup> (XYZ mm) (R °)	+/-0.01	+/-0.01	+/-0.01	+/-0.0083
<b>Drive system</b>	Ball screw (Class C7)	Ball screw (Class C7)	Ball screw (Class C7)	Harmonic gear
<b>Ball screw lead (Deceleration ratio) (mm)</b>	20	20	20	(1/50)
<b>Maximum speed</b> <sup>Note 3</sup> (XYZ: mm/sec) (R: °/sec)	1200	1200	1200	360
<b>Moving range (XYZ mm) (R °)</b>	150 to 1050	150 to 550	150 to 350	360
<b>Robot cable length (m)</b>	Standard: 3.5 Option: 5.10			

Note 1. Use caution that the flame machining (installation holes, tap holes) differs from single-axis robots.  
Note 2. Positioning repeatability in one direction.  
Note 3. When the X-axis stroke is longer than 750mm, resonance of the ball screw may occur depending on the operation conditions (critical speed). In this case, reduce the speed setting on the program by referring to the maximum speeds shown in the table below.

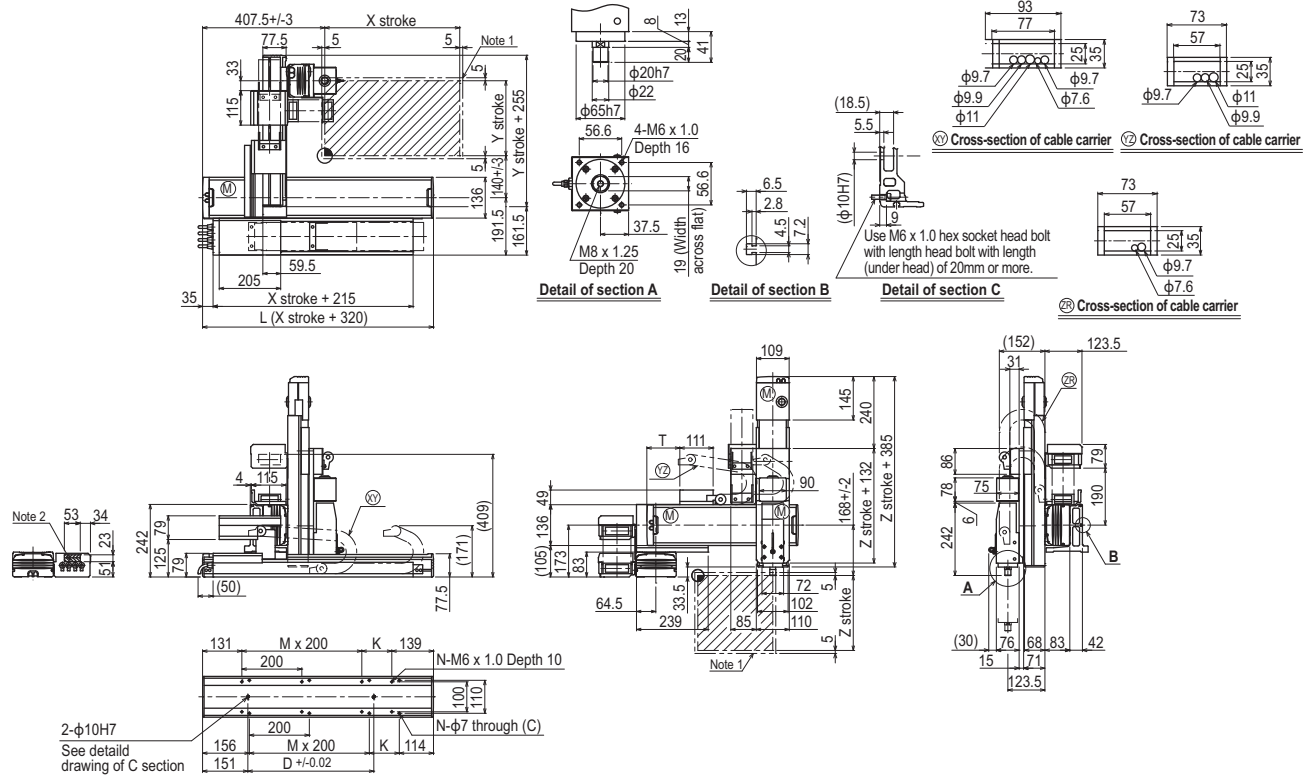
## Maximum payload (kg)

Y stroke (mm)	Z stroke (mm)		
	150	250	350
150	4	4	4
250	4	4	3
350	4	3	1
450	2	1	-
550	1	-	-

## Controller

Controller	Operation method
RCX240-R	Programming / I/O point trace / Remote command / Operation using RS-232C communication

## SXYx 4 axes / ZRFL20 A1



X stroke	150	250	350	450	550	650	750	850	950	1050			
	L	470	570	670	770	870	970	1070	1170	1270	1370		
K	200	100	200	100	200	100	200	100	200	100			
D	240	240	420	420	600	600	780	960	960	1140			
M	0	1	1	2	2	3	3	4	4	5			
N	4	6	6	8	8	10	10	12	12	14			
Y stroke													
T	150	250	350	450	550								
	55	110	165	220	275								
Z stroke													
	150	250	350										
<b>Maximum speed for each stroke (mm/sec)</b> <sup>No. 3</sup>	X-axis		1200			960		780		600		540	
<b>Speed setting</b>			-			80%		65%		50%		45%	

Note 1. The moving range when returning to origin and the stop position when stopping by the mechanical stopper.  
Note 2. The shaded position indicates a user cable extraction port.

Note 3. When the X-axis stroke is longer than 750mm, resonance of the ball screw may occur depending on the operation conditions (critical speed). In this case, reduce the speed setting on the program by referring to the maximum speeds shown in the table at the left.