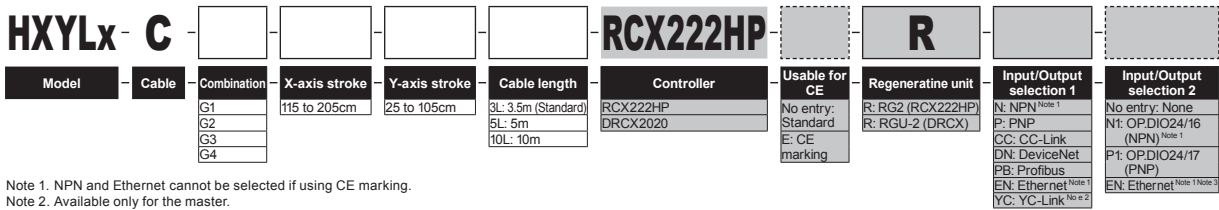


# HXYLx 2 axes

- Gantry type
- Cable carrier

## Ordering method



Note 1. NPN and Ethernet cannot be selected if using CE marking.  
 Note 2. Available only for the master.  
 Note 3. Only when CC or DN or PB was selected for I/O select 1 above. EN can be selected in I/O select 2.

## Specification

	X-axis	Y-axis
<b>Axis construction</b> <sup>Note 1</sup>	F20N	F17
<b>AC servo motor output (W)</b>	400	400
<b>Repeatability</b> <sup>Note 2</sup> (mm)	+/-0.04	+/-0.01
<b>Drive system</b>	Ball screw (Class C10)	Ball screw (Class C7)
<b>Ball screw lead (Deceleration ratio) (mm)</b>	20	20
<b>Maximum speed</b> <sup>Note 3</sup> (mm/sec)	1200	1200
<b>Moving range (mm)</b>	1150 to 2050	250 to 1050
<b>Robot cable length (m)</b>	Standard: 3.5 Option: 5,10	

Note 1. Use caution that the flame machining (installation holes, tap holes) differs from single-axis robots.  
 Note 2. Positioning repeatability in one direction.  
 Note 3. When the Y-axis stroke is longer than 850mm, resonance of the ball screw may occur depending on the operation conditions (critical speed). In this case, reduce the speed setting on the program by referring to the maximum speeds shown in the table below.

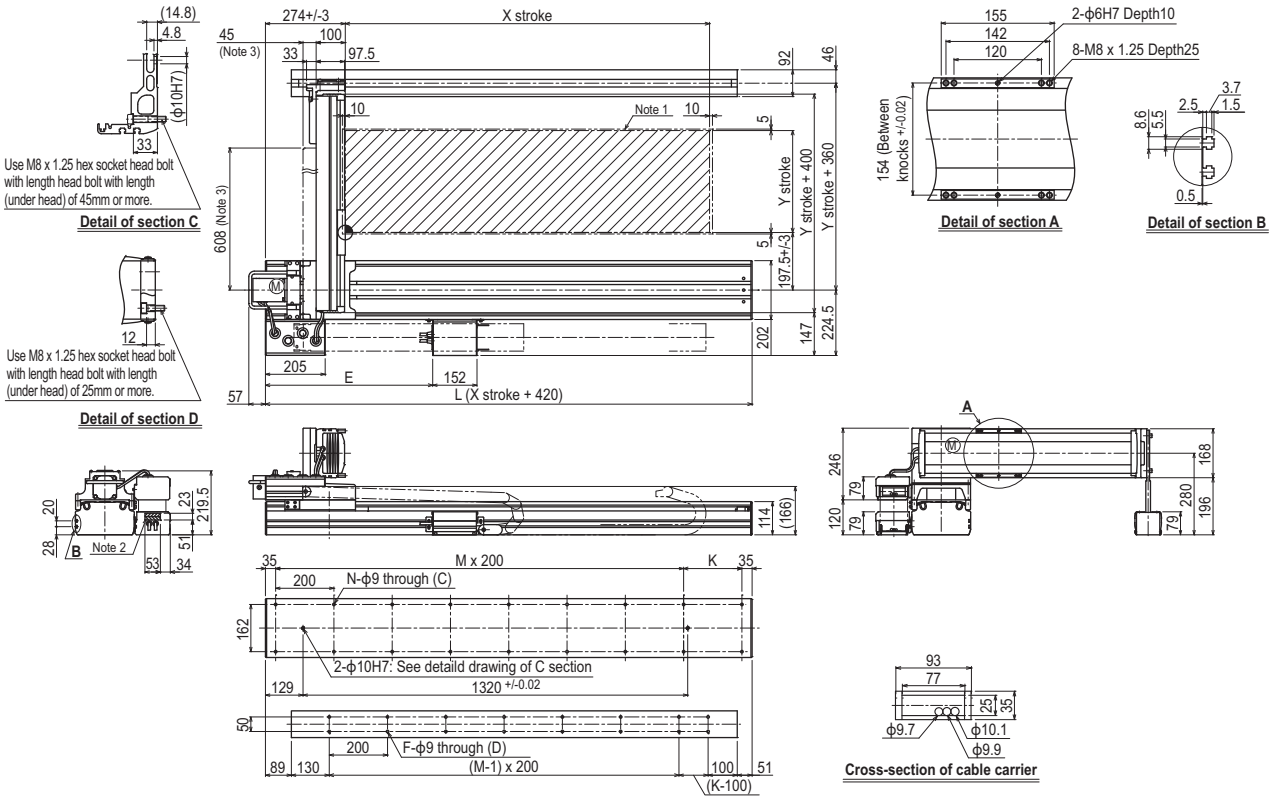
## Maximum payload (kg)

Y stroke (mm)	XY 2 axes
250 to 1050	50

## Controller

Controller	Operation method
RCX222HP-R	Programming / I/O point trace / Remote command / Operation using
DRCX2020-R	RS-232C communication

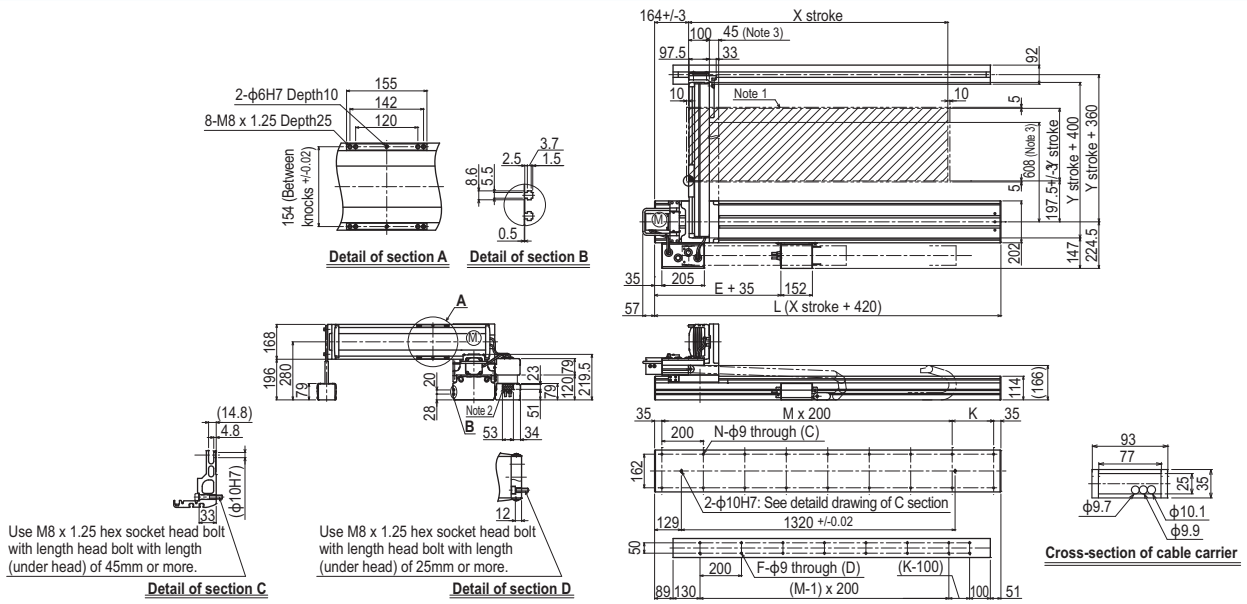
## HXYLx 2 axes G1



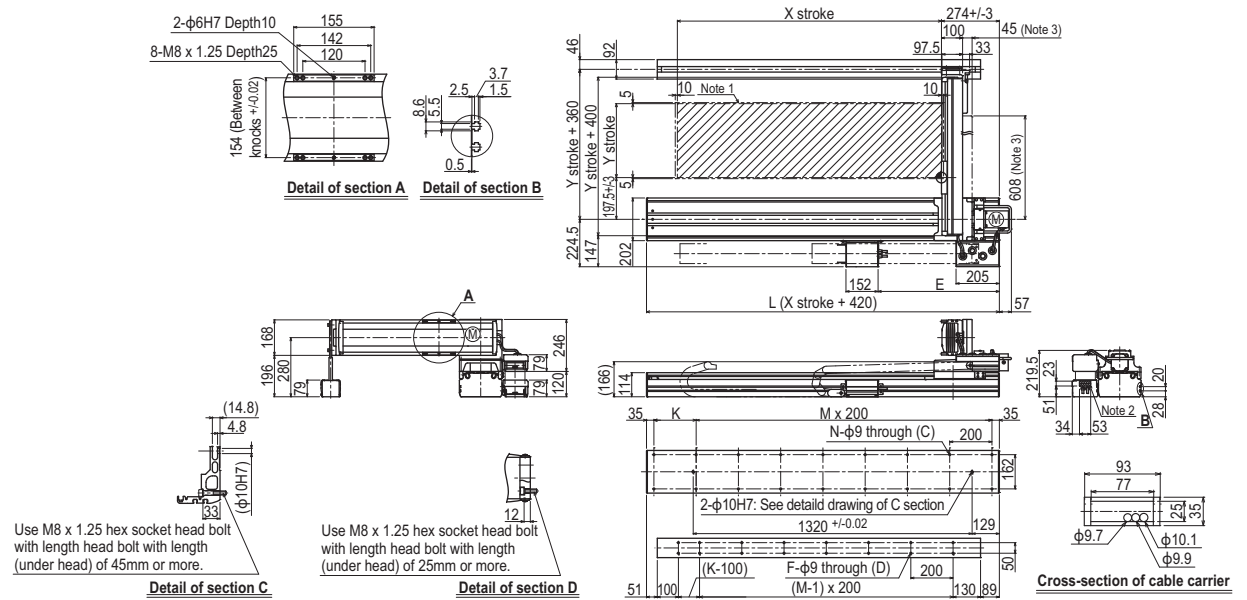
X stroke	1150	1250	1350	1450	1550	1650	1750	1850	1950	2050	
<b>L</b>	1570	1670	1770	1870	1970	2070	2170	2270	2370	2470	
<b>E</b>	528	574	620	666	712	758	804	850	896	942	
<b>K</b>	100	200	100	200	100	200	100	200	100	200	
<b>M</b>	7	7	8	8	9	9	10	10	11	11	
<b>N</b>	18	18	20	20	22	22	24	24	26	26	
<b>F</b>	14	16	16	18	18	20	20	22	22	24	
<b>Y stroke</b>	250	350	450	550	650	750	850	950	1050		
<b>Maximum speed for each stroke (mm/sec)</b> <sup>Note 4</sup>	Y-axis		1200				960		840		720
<b>Speed setting</b>			-				80%		70%		60%

Note 1. The moving range when returning to origin and the stop position when stopping by the mechanical stopper.  
 Note 2. User cable extraction port.  
 Note 3. Dimension of reinforced bracket (To be installed when the Y stroke is 750mm or longer)  
 Note 4. When the Y-axis stroke is longer than 850mm, resonance of the ball screw may occur depending on the operation conditions (critical speed). In this case, reduce the speed setting on the program by referring to the maximum speeds shown in the table at the left.

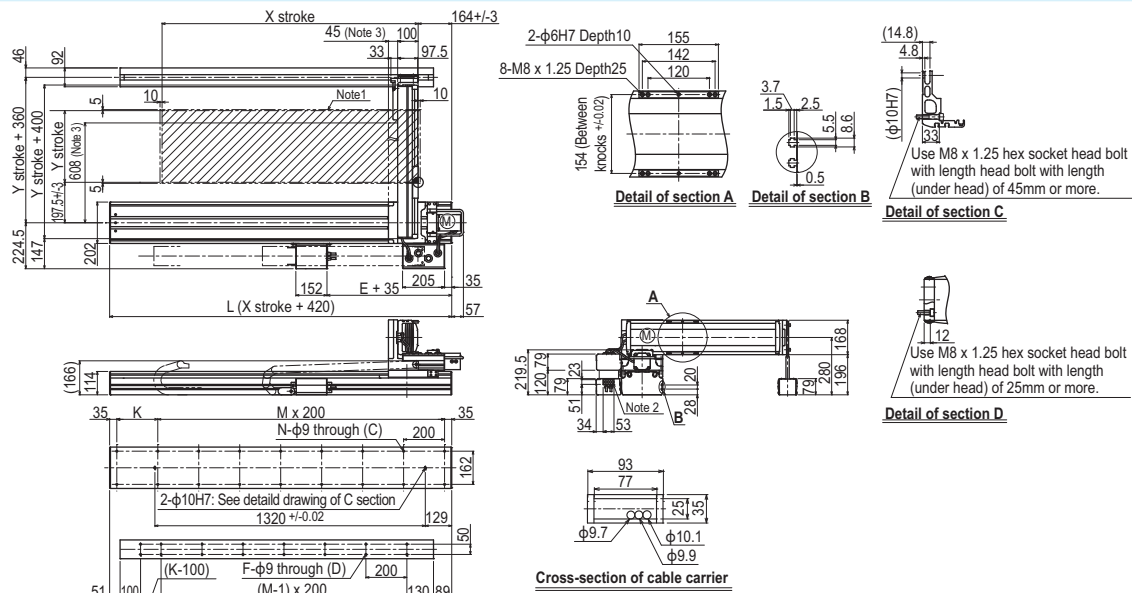
HXYLx 2 axes **G2**



HXYLx 2 axes **G3**



HXYLx 2 axes **G4**



APPLICATION  
 TRANSERO  
 FLIP-X  
 PHASER  
 XY-X  
 YK-XG  
 YP-X  
 CLEAN  
 CONTROLLER  
 INFORMATION  
 Arm type  
 Gantry type  
 Moving arm type  
 Pole type  
 XZ type