

# SXYBx 2 axes / ZFL20

● XY type   ● Cable carrier

## Ordering method

<b>SXYBx - C</b>			<b>ZFL20</b>			<b>RCX222</b>		<b>R</b>			
<b>Model</b>	<b>Cable</b>	<b>Combination</b>	<b>X-axis stroke</b>	<b>ZR-axis</b>	<b>Z-axis stroke</b>	<b>Cable length</b>	<b>Controller</b>	<b>Usable for CE</b>	<b>Regenerative unit</b>	<b>Input/Output selection 1</b>	<b>Input/Output selection 2</b>
F1		F1	15 to 305cm		15 to 35cm	3L: 3.5m (Standard) 5L: 5m 10L: 10m	RCX222 DRCX0510	No entry: Standard E: CE marking	R: RG2 (RCX222) R: RGU-2 (DRCX)	N: NPN <sup>Note 1</sup> P: PNP CC: CC-Link DN: DeviceNet PB: Profibus EN: Ethernet <sup>Note 1</sup> YC: YC-Link <sup>Note 2</sup>	No entry: None Nt: OP.DIO24/16 (NPN) <sup>Note 1</sup> Pt: OP.DIO24/17 (PNP) EN: Ethernet <sup>Note 1 No. 2</sup>

Note 1. NPN and Ethernet cannot be selected if using CE marking.  
 Note 2. Available only for the master.  
 Note 3. Only when CC or DN or PB was selected for I/O select 1 above. EN can be selected in I/O select 2.

## Specification

	X-axis	Z-axis
<b>Axis construction</b> <sup>Note 1</sup>	B14H	F10-BK equivalent guide-reinforced model
<b>AC servo motor output (W)</b>	200	200
<b>Repeatability</b> <sup>Note 2</sup> (mm)	+/-0.04	+/-0.01
<b>Drive system</b>	Timing belt	Ball screw (Class C7)
<b>Ball screw lead (Deceleration ratio) (mm)</b>	Equivalent to lead 25	20
<b>Maximum speed (mm/sec)</b>	1875	1200
<b>Moving range (mm)</b>	150 to 3050	150 to 350
<b>Robot cable length (m)</b>	Standard: 3.5   Option: 5,10	

Note 1. Use caution that the flame machining (installation holes, tap holes) differs from single-axis robots.  
 Note 2. Positioning repeatability in one direction.

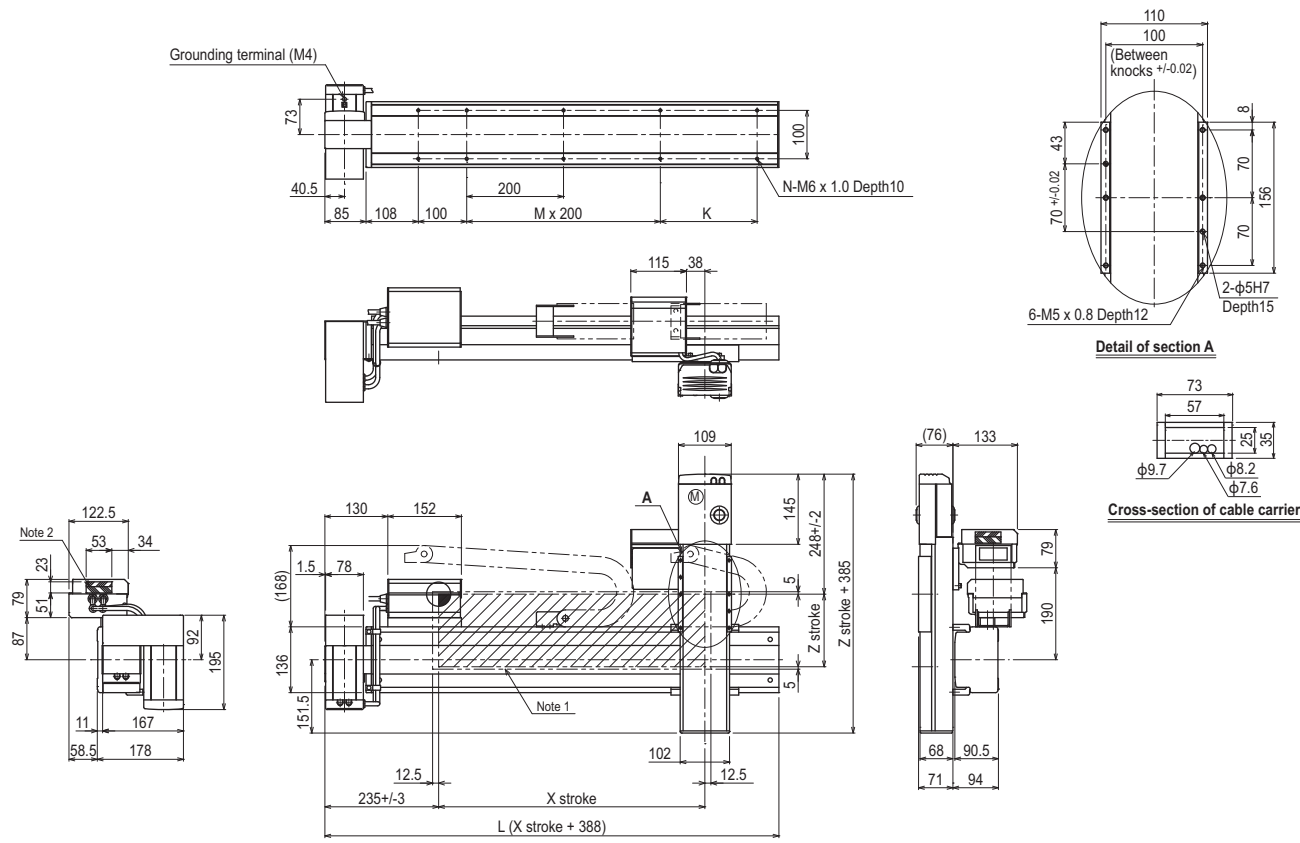
## Maximum payload (kg)

X stroke (mm)	Z stroke (mm)
150 to 3050	8

## Controller

Controller	Operation method
RCX222-R	Programming / I/O point trace / Remote command / Operation using RS-232C communication
DRCX0510-R	

## SXYBx 2 axes / ZFL20 F1



Note 1. The moving range when returning to origin and the stop position when stopping by the mechanical stopper.  
 Note 2. The shaded position indicates an user cable extraction port.  
 Note 3. LU specification should be used for installation of the X axis motor.

X stroke	150	250	350	450	550	650	750	850	950	1050	1150	1250	1350	1450	1550	1650	1750	1850	1950	2050	2150	2250	2350	2450	2550	2650	2750	2850	2950	3050
<b>L</b>	538	638	738	838	938	1038	1138	1238	1338	1438	1538	1638	1738	1838	1938	2038	2138	2238	2338	2438	2538	2638	2738	2838	2938	3038	3138	3238	3338	3438
<b>K</b>	-	100	200	100	200	100	200	100	200	100	200	100	200	100	200	100	200	100	200	100	200	100	200	100	200	100	200	100	200	100
<b>M</b>	1	1	1	2	2	3	3	4	4	5	5	6	6	7	7	8	8	9	9	10	10	11	11	12	12	13	13	14	14	15
<b>N</b>	6	8	8	10	10	12	12	14	14	16	16	18	18	20	20	22	22	24	24	26	26	28	28	30	30	32	32	34	34	36
<b>Z stroke</b>	150	250	350																											

Controller  
**RCX222 ▶ 395   DRCX ▶ 387**

# 261

APPLICATION  
 TRANSERO  
 FLIP-X  
 PHASER  
 XY-X  
 YK-XG  
 YP-X  
 CLEAN  
 CONTROLLER  
 INFORMATION  
 Arm type  
 Gantry type  
 Moving arm type  
 Pole type

XYZ type