

STH06

Slide table type



- CE compliance
- Origin on the non-motor side is selectable

Ordering method

STH06

Model	Lead	Model	Brake	Origin position	Bracket plate	Stroke	Cable length
	08: 8mm 16: 16mm	S: Straight model R: Space-saving model (motor installed on right) L: Space-saving model (motor installed on left)	N: With no brake B: With brake	N: Standard Z: Non-motor side	N: No plate H: With plate	50: 50mm 100: 100mm 150: 150mm	1K: 1m 3K: 3m 5K: 5m 10K: 10m

S2

Robot positioner	I/O
S2: TS-S2	NP: NPN PN: PNP CC: CC-Link DN: DeviceNet™ EP: EtherNet/IP™ PT: PROFINET GW: No I/O board

SH

Robot positioner	I/O	Battery
SH: TS-SH	NP: NPN PN: PNP CC: CC-Link DN: DeviceNet™ EP: EtherNet/IP™ PT: PROFINET GW: No I/O board	B: With battery (Absolute) N: None (Incremental)

SD

Robot driver	I/O cable
SD: TS-SD	1: 1m

- Note 1. If changing from the origin position at the time of purchase, the machine reference amount must be reset. For details, refer to the manual.
- Note 2. Space-saving models (R and L) with the plate cannot be selected.
- Note 3. The robot cable is flexible and resists bending.
- Note 4. See P.498 for DIN rail mounting bracket.
- Note 5. The robot with the brake cannot use the TS-SD.
- Note 6. Select this selection when using the gateway function. For details, see P.60.

Basic specifications

Motor	42 □ Step motor	
Resolution (Pulse/rotation)	20480	
Repeatability (mm)	+/- 0.05	
Drive method	Straight	Slide screw
	Space-saving	Slide screw + belt
Ball screw lead (mm)	8 16	
Maximum speed (mm/sec)	150 400	
Maximum payload (kg)	Horizontal	9 6
	Vertical	4 2
Max. pressing force (N)	180 100	
Stroke (mm)	50/100/150	
Maximum outside dimension of body cross-section (mm)	Straight	W61 × H65
	Space-saving	W108 × H70
Cable length (m)	Standard: 1 / Option: 3, 5, 10	

- Note 1. Positioning repeatability in one direction.
- Note 2. The maximum speed needs to be changed in accordance with the payload.
- See the "Speed vs. payload" graph shown on the right. For details, see P. 128.

Allowable overhang

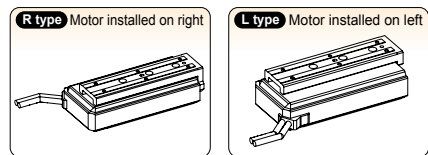
Lead	Horizontal installation (Unit: mm)			Wall installation (Unit: mm)			Vertical installation (Unit: mm)		
	A	B	C	A	B	C	A	B	C
Lead 16	2kg 3000	2123	1436	2kg 1500	2091	3000	1kg 3000	3000	3000
Lead 8	4kg 2493	1001	680	4kg 710	975	2443	1.5kg 2458	2457	2457
	6kg 1571	627	428	6kg 440	603	1524	2kg 1837	1837	1837
Lead 8	3kg 3000	1375	932	3kg 979	1347	3000	2kg 1837	1837	1837
	6kg 1571	627	428	6kg 440	603	1524	3kg 1217	1216	1216
Lead 8	9kg 956	378	260	9kg 260	355	912	4kg 907	906	906

- Note. Overhang at travelling service life of 3000km. (Service life is calculated for 100mm stroke models.)

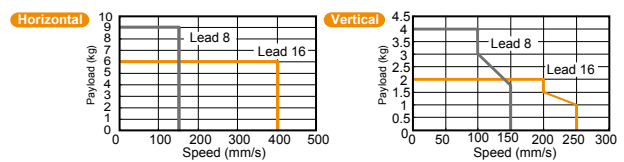
Static loading moment

Stroke	(Unit: N-m)		
	MY	MP	MR
50mm	77	77	146
100mm	112	112	177
150mm	155	155	152

Motor installation (Space-saving model)



Speed vs. payload

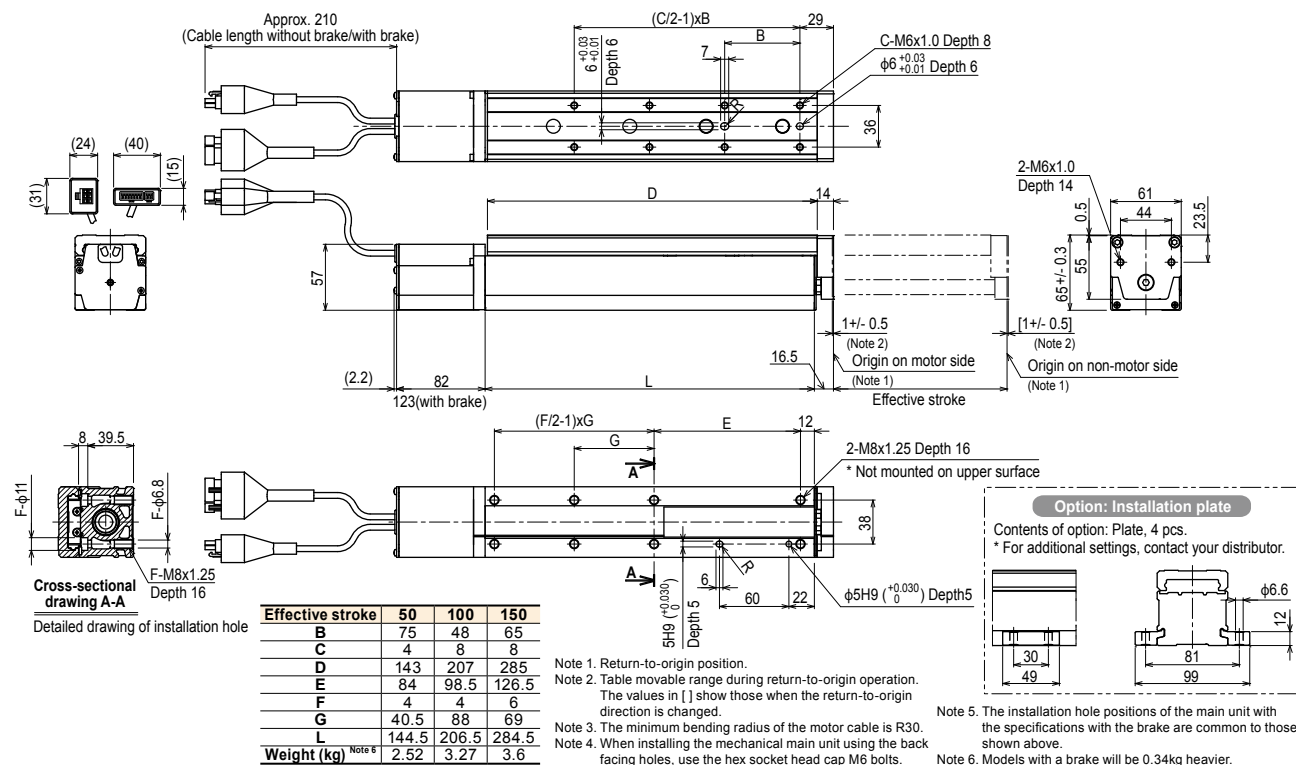


Controller

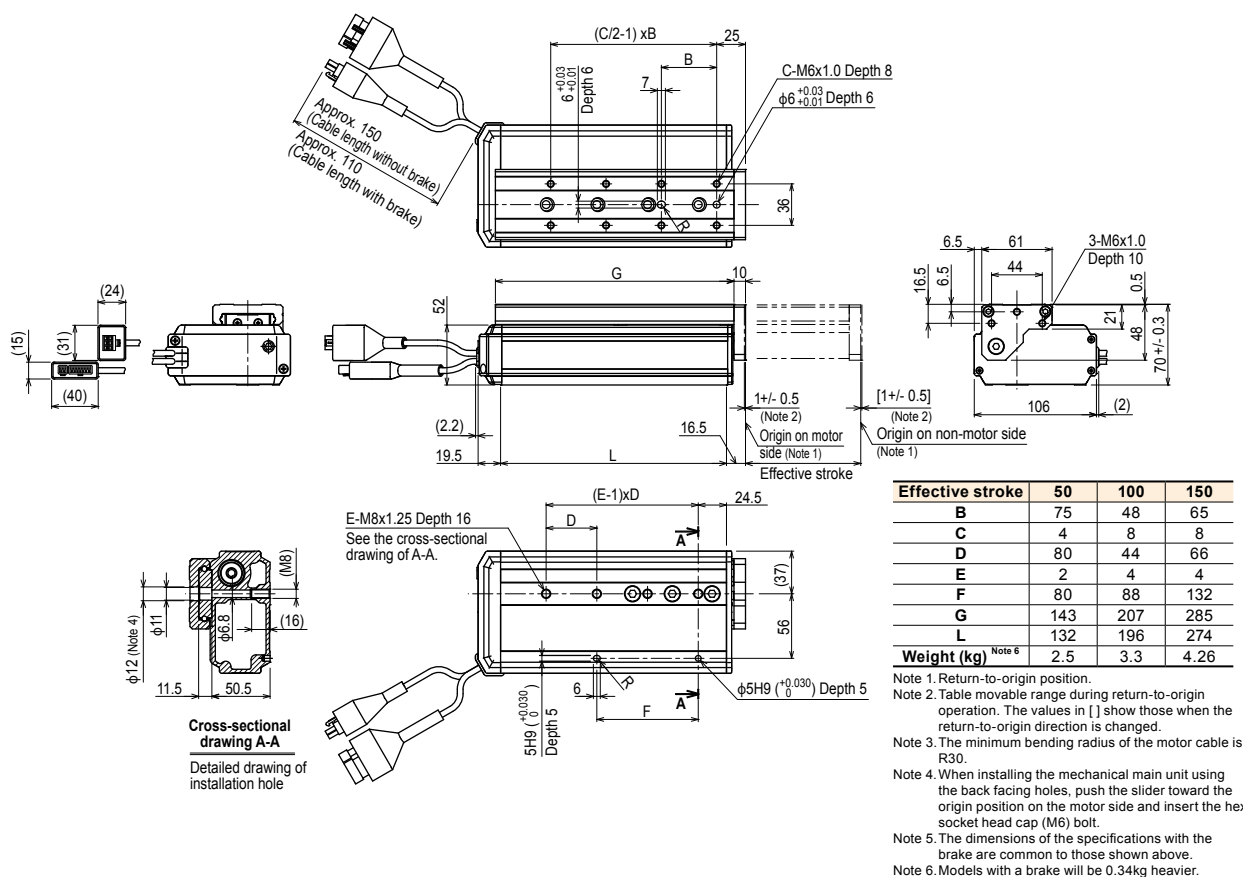
Controller	Operation method
TS-S2	I/O point trace / Remote command
TS-SH	Remote command
TS-SD	Pulse train control

- Note. The robot with the brake cannot use the TS-SD.

STH06 Straight model S



STH06 Space-saving model (motor installed on right) **R**



STH06 Space-saving model (motor installed on left) **L**

