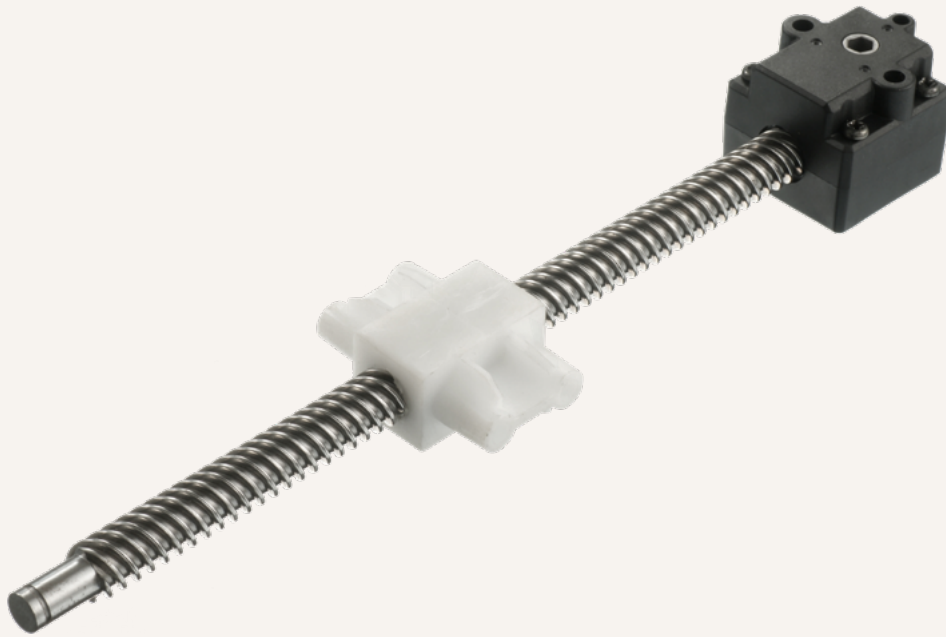


# TBS1

series



---

## Product Segments

- **Ergo Motion**
- **Industrial Motion**

---

## General Features

Especially designed for TGM series

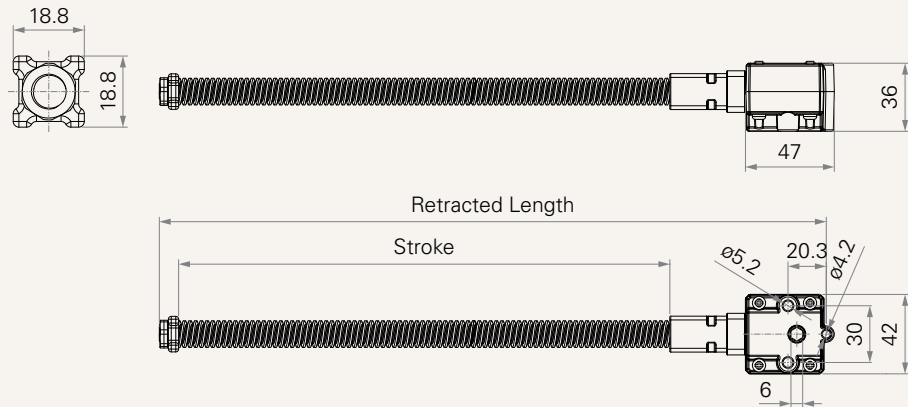
Recommended stroke 20~600mm

Minimum retracted length  $\geq$  stroke + 93mm (without inner tube)

Maximum load 1,000N

**Drawing**

Standard Dimensions  
(mm)



**Load and Speed**

CODE	Spindle	Gear Ratio	Rated Load (N)	Rated Torque (Nm)	Lead (mm/turn)	Typical Speed (mm/s)
A	4*4	1	1000	4.6	16	(TGM motor speed/60)*1*16
B	4*5	1	1000	5.4	20	(TGM motor speed/60)*1*20

**Note**

1 Please refer to the approved drawing for the final authentic value.

TBS1

Version: 20190421-E

---

<b>Load and Speed</b>	<a href="#">See page 2</a>
-----------------------	----------------------------

---

<b>Stroke (mm)</b>	020-600
--------------------	---------

---

<b>Retracted Length (mm)</b>	With inner tube: Minimum retract length needs to $\geq S+110$ Without inner tube: Minimum retract length needs to $\geq S+93$
------------------------------	--

---

<b>Input Torque (mm)</b>	1 = Coupler hole, 6
--------------------------	---------------------

---

<b>Nut</b>	1 = With
------------	----------

---

<b>Inner Tube (mm)</b>	0 = Without                      1 = Square tube, 22*22
------------------------	---

---

<b>Front Attachment (mm)</b>	1 = Plastic
------------------------------	-------------

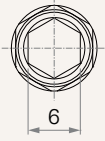
---

[See page 4](#)

---

## Input Torque (mm)

1 = Coupler hole, 6



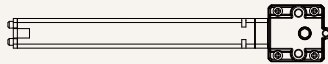
---

## Inner Tube (mm)

0 = Without



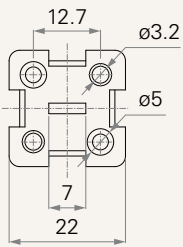
1 = Square tube, 22\*22



---

## Front Attachment (mm)

1 = Plastic



---

## Terms of Use

The user is responsible for determining the suitability of TiMOTION products for a specific application. TiMOTION products are subject to change without prior notice.